



ESTADI OLÍMPIC CAMILO CANO



WELCOME



ESTADI OLÍMPIC CAMILO CANO

The new Olympic Stadium Camilo Cano is built on a 34,310 square metre plot, located next to the outdoor Parking Area of the Sports Hall in the City of Sports.

This Project includes the building of a Natural Grass 11 Football Pitch (with FIFA dimensions to play international matches), a modern Athletics Track, fully equipped with the latest generation pavement MONDO, very similar to the one to be installed by this Italian Brand in 2020 Olympic Games in Tokio.

Both the Athletics Track and the Natural Grass Football Pitch will be authorised to host international top-level competitions, organized by the IAAF (International Athletics Federation) or by the FIFA, as reflected in its selection as the venue of Spanish Athletics Championships. The accreditation is valid for ten years, after that period of time a safety check of the facility will be done to continue with the above mentioned accreditation.





OLYMPIC STADIUM CAMILO CANO IN FIGURES

2,750
Built
square metres.

30,000
Square metres
of land.

8
Lanes
(400 metres).

4
Lighting
Towers.

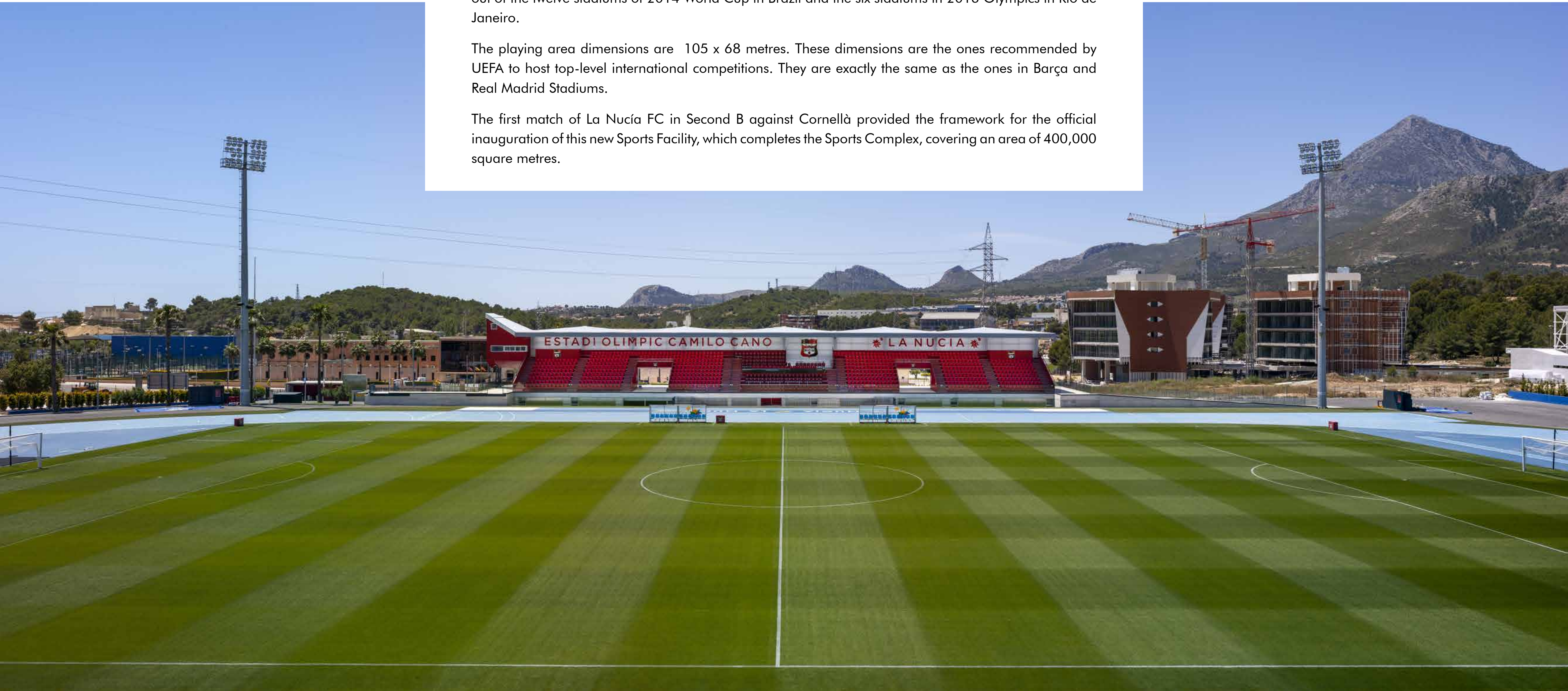


FOOTBALL PITCH

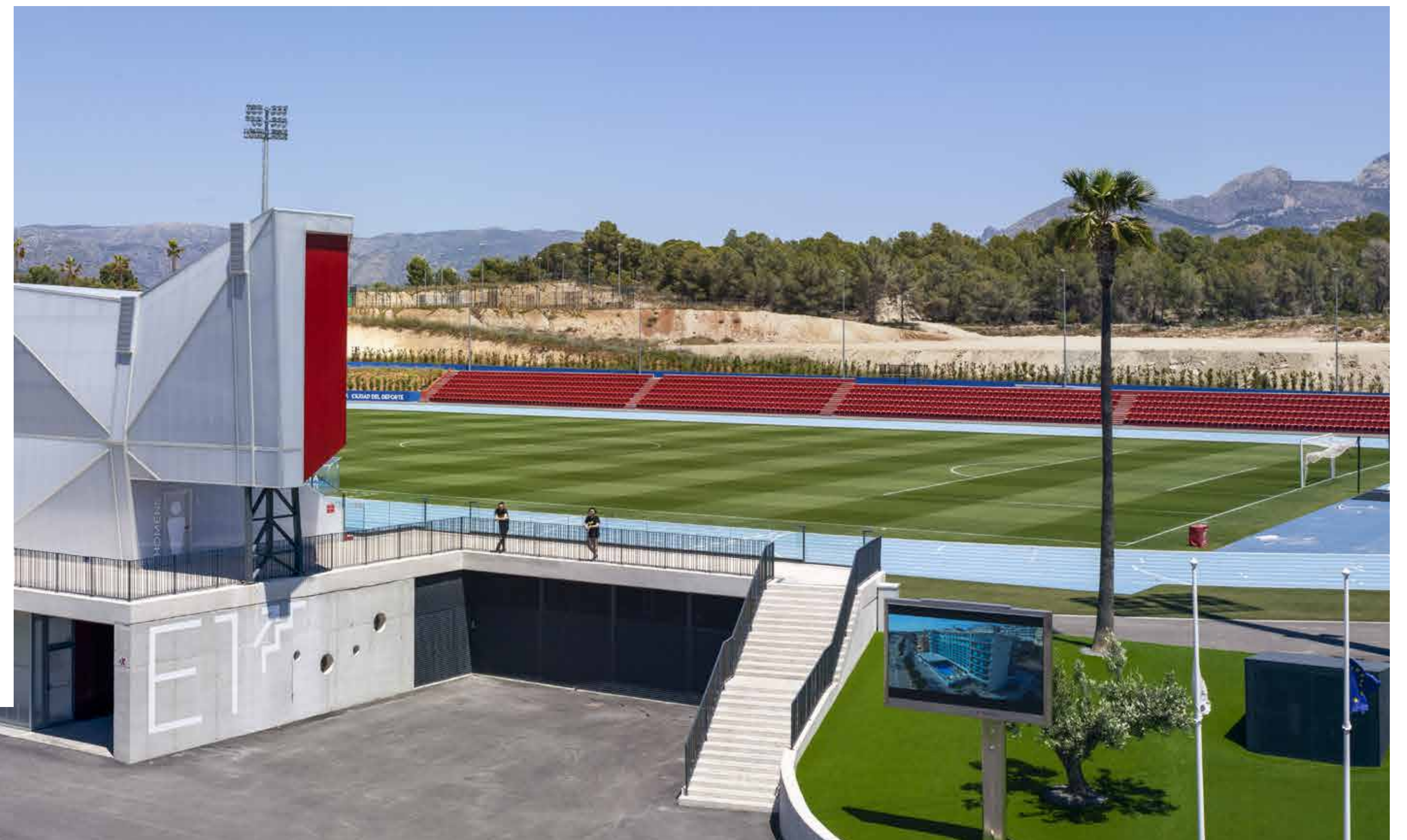
The Natural Grass Football Pitch, Royal Verd, the same as the one installed in el Nou Camp and in seven out of the twelve stadiums of 2014 World Cup in Brazil and the six stadiums in 2016 Olympics in Río de Janeiro.

The playing area dimensions are 105 x 68 metres. These dimensions are the ones recommended by UEFA to host top-level international competitions. They are exactly the same as the ones in Barça and Real Madrid Stadiums.

The first match of La Nucía FC in Second B against Cornellà provided the framework for the official inauguration of this new Sports Facility, which completes the Sports Complex, covering an area of 400,000 square metres.



BUILDING FOLLOWING THE STANDARDS OF FIFA AND UEFA

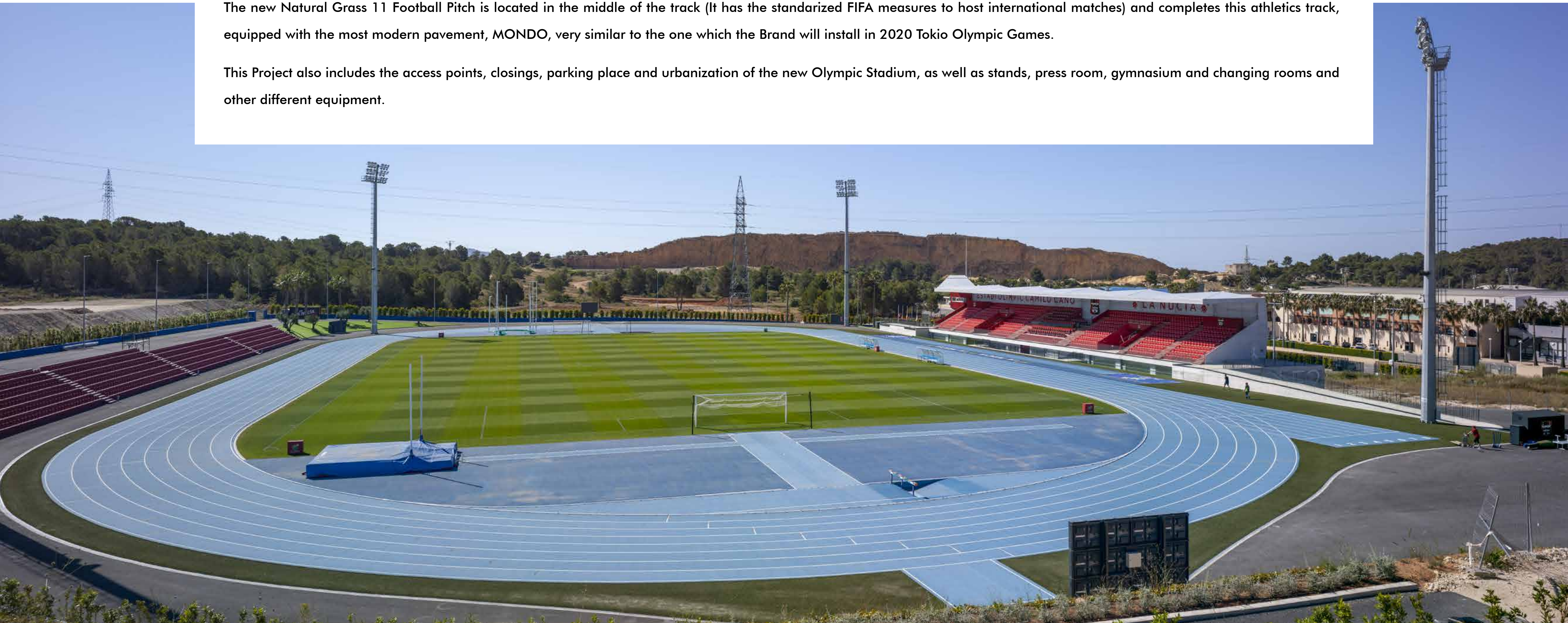


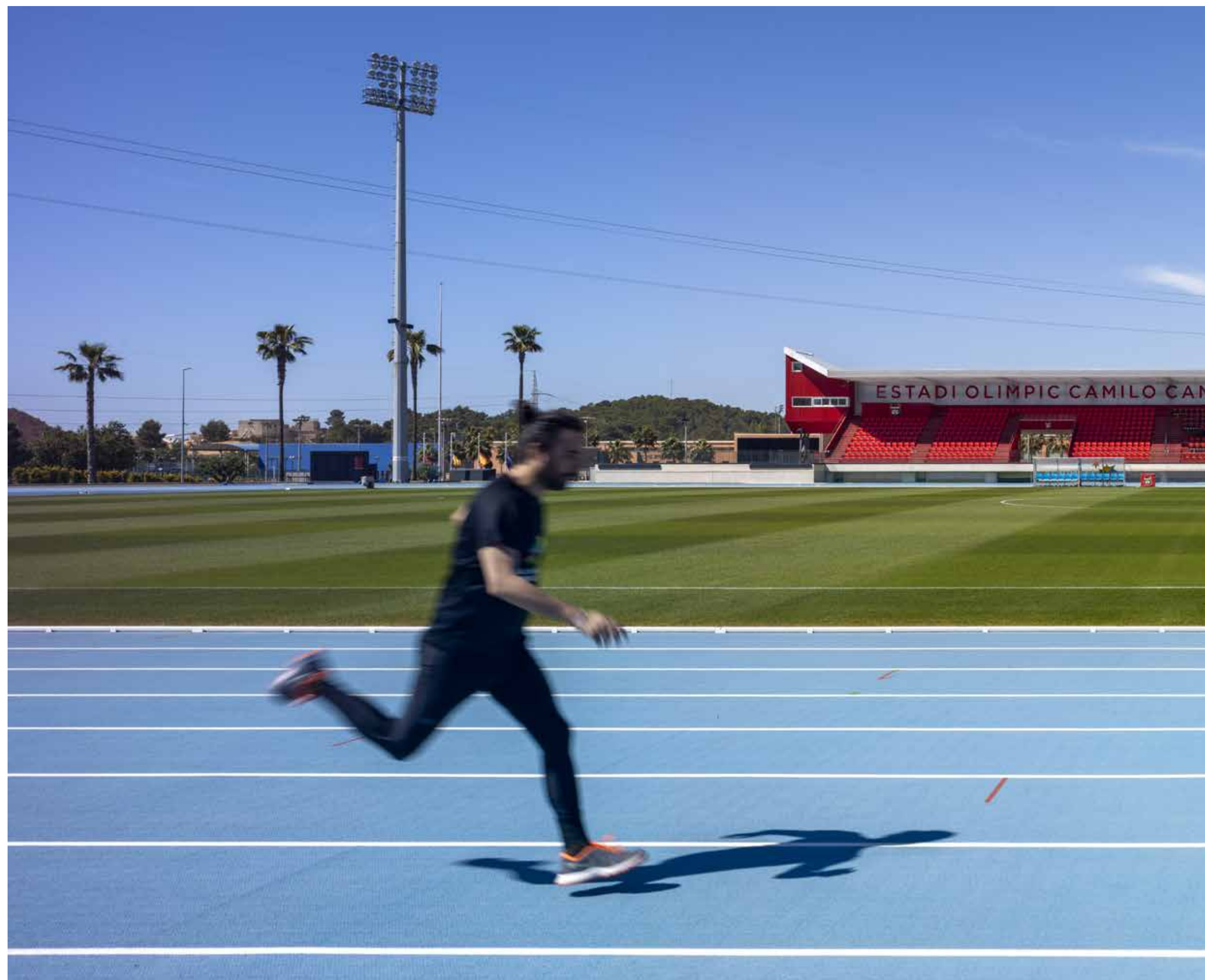
ATHLETICS TRACK

An Athletics track with eight 400 m. lanes, with a technical support of prefabricated rubber f 13.5 mm, Sportflex SX 720, MONDO. A very efficient pavement especially designed to host top-level international competitions. This track is perfect for national and international athletics competitions in all disciplines: races, pole vault, hammer and discus throw, obstacle races, long jump, triple jump, etc.

The new Natural Grass 11 Football Pitch is located in the middle of the track (It has the standardized FIFA measures to host international matches) and completes this athletics track, equipped with the most modern pavement, MONDO, very similar to the one which the Brand will install in 2020 Tokio Olympic Games.

This Project also includes the access points, closings, parking place and urbanization of the new Olympic Stadium, as well as stands, press room, gymnasium and changing rooms and other different equipment.





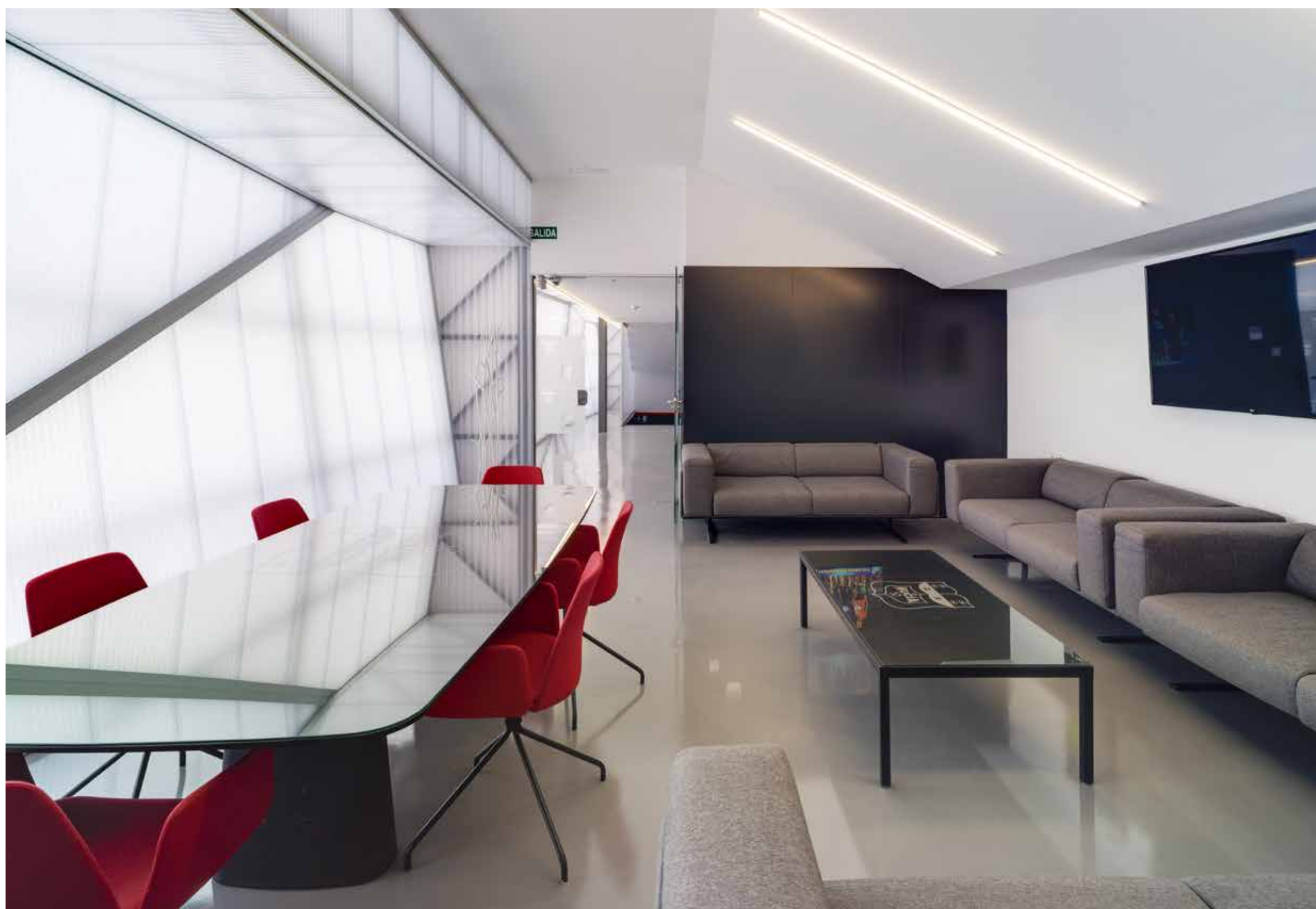
PROFESSIONAL ATHLETICS TRACK

Lanes: Eight 4,484m² athletics tracks with certificate IAAF-S-99-0006 with a 2,168m² lunette space and a 462m² long jump area. It fulfils the requirements of the Athletics Federation for the homologation of a facility as Type I IAAF and rule UNE IN 14877:2013. Ring road warm-up area with artificial grass and an extension of 1,553 square metres.

Athletics Facilities: Long jump, triple jump, high jump, pole vault, shot put, hammer, discus and javelin throw, combined events, obstacle courses, relay race, 100, 200, 400... m. races, long distance races and the most modern football pitch.

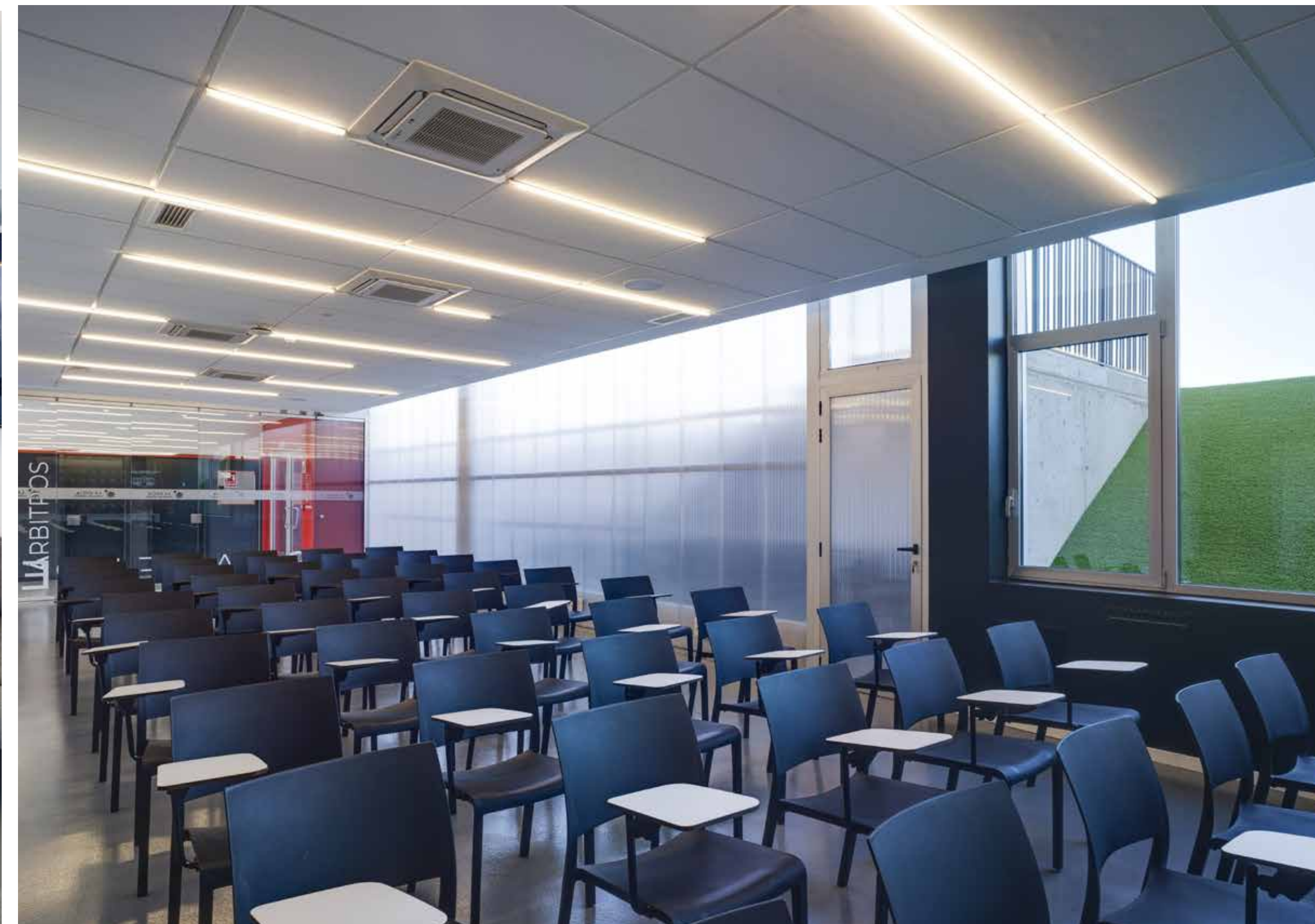
[TECHNICAL DETAILS](#)

[APPROVAL CERTIFICATE](#)



VIP ROOMS

Two 45m² VIP Rooms with a 27m² anteroom and access to a 13m² kitchen with bottle racks, prepared to serve catered meals and coffee. It also has its own warehouse and toilets.



OFFICES

There are two 12.50 m² offices.

PRESS ROOM

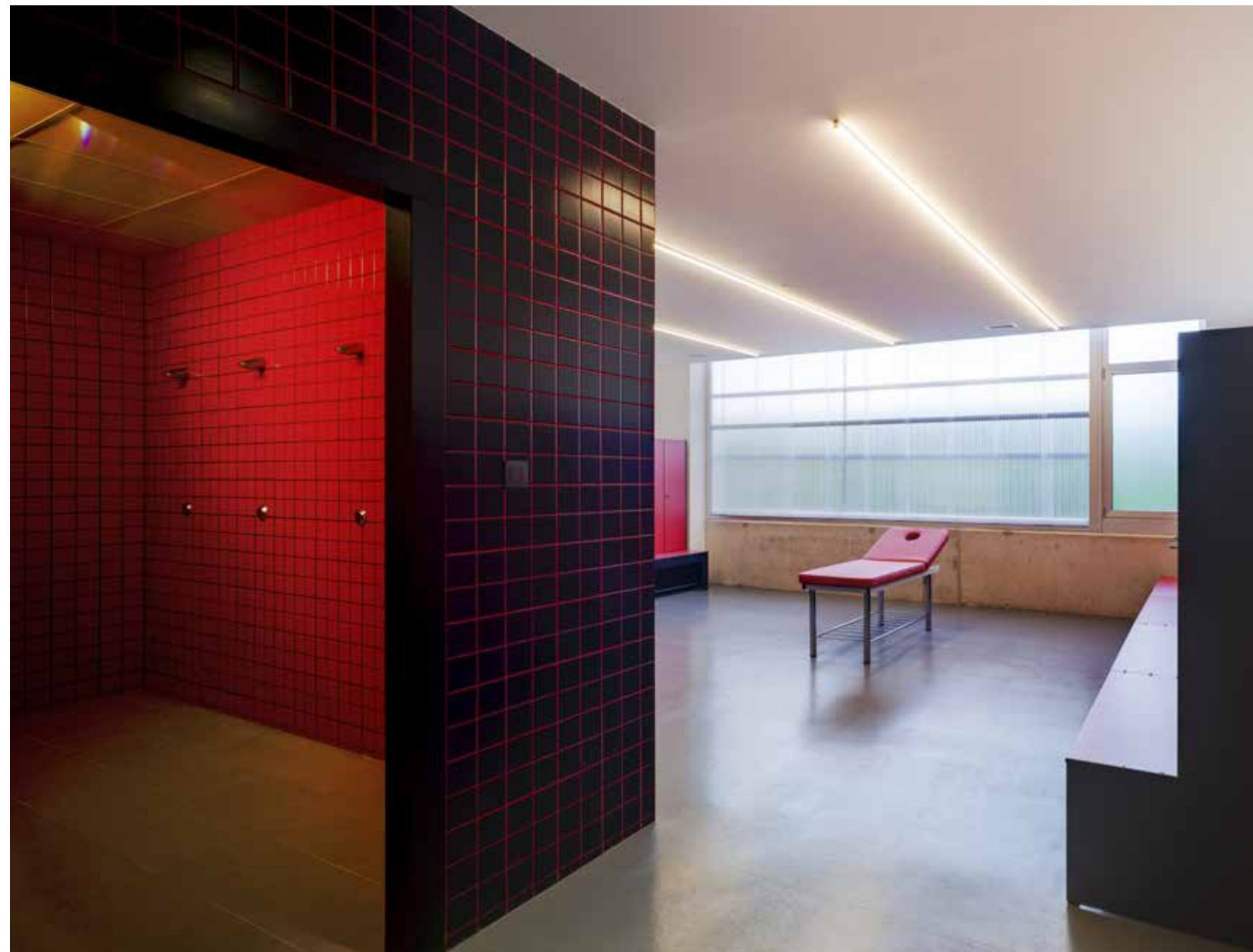
A 112 m² Press Room with a seating capacity of 50 journalists, and with TV and Radio connections. The television has a unique touch screen and cutting-edge multimedia capabilities.

CHANGING ROOMS

There are four 80.76m² changing rooms for players and athletes and two 22.50m² changing rooms for referees.

GYMNASIUM

A fully equipped 88.30m² gymnasium.



* CUSTOMIZED

We adapt all the facilities to the needs of the organization or the team's Brand.

APLIFIT PLAY

The Gymnasium at the Olympic Stadium Camilo Cano is provided with Aplitfit Play, a technological and audio-visual support system applied to Fitness, which allows users to view different training parameters. These are registered in the cloud in order to analyse them once the session finishes.

PARAMETERS:

- Heart Rate.
- Wattage.
- Revolutions per minute.
- Calories.





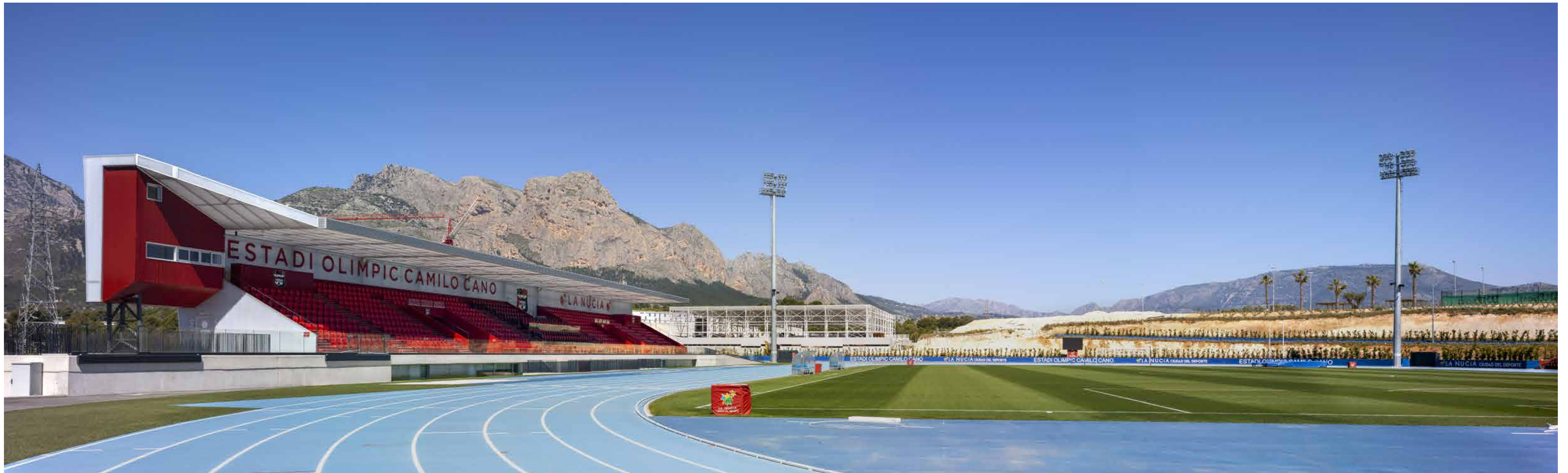
LEVANTE U.D IN THE OLYMPIC STADIUM CAMILO CANO

Different programs on TV, advertising campaigns, new grass, lighting... were organized to hold the First Division Matches of Levante U.D in the Olympic Stadium Camilo Cano.

TECHNICAL DETAILS

Year of construction: 2018.

- Built-up area: 1,757 built square metres, 630m² of platform accesses and 633m² of tribune.
- Dimensions of the playing field: 105x68 metres.
- Artificial grass: Grass MONDOTURF NSF 88 25 mm height, 8.800 dtex made with gauge 5/16" and with 22,500 stitch length/m².
- Grass in the Playing Field: Vegetal cover, Pricess 77 and ray grass.
- Building system with drainage: 20 cm gravels and 25 cm top soil.
- Irrigation system with 35 sprinklers.
- Seats: 2,100 people seated on fixed stands.
- Press: 2 Press rooms, 10.50 square metres each.
- Photo Finish: It has a 9.50m² Fotofinish room with a small loft used for recording.





CCTV VIDEO-SURVEILLANCE SYSTEM

It is used for activities of various kinds as well as for league football matches taking place in the Olympic Stadium Camilo Cano (Service only)

1st. Uco Room:

- Server/ Recorder.
- Communication Switches.
- 2 Ups power supply units.
- 5 view monitor units.
- 2 CPU management units owned by the Town Council.

2nd. Rack Communication Hall Olympic Stadium:

- Communication switch cameras.

3rd. Towers of the Olympic Stadium:

- 1 Domo Motorized Camera Unit in each of the 3 Towers.
- 1 Communication Switch Unit in each of the 3 towers.

4th. Roundabout 1 La Nucía:

- 2 Communication Switch Units communicated via fibre.

5th. CPD Local Police:

- Central Servers and Communication Devices.



EVENTS



FIRST DIVISION MATCHES

The Levante U.D chose La Nucía to play its 6 last matches in the Santander League, due to the ideal conditions of the playing field, a perfect natural grass and the right dimensions, 105 x 68 metres. It also played a very important role the modern and complete equipment of the Stadium: it fulfils all the requirements of "La Liga".



LaLiga



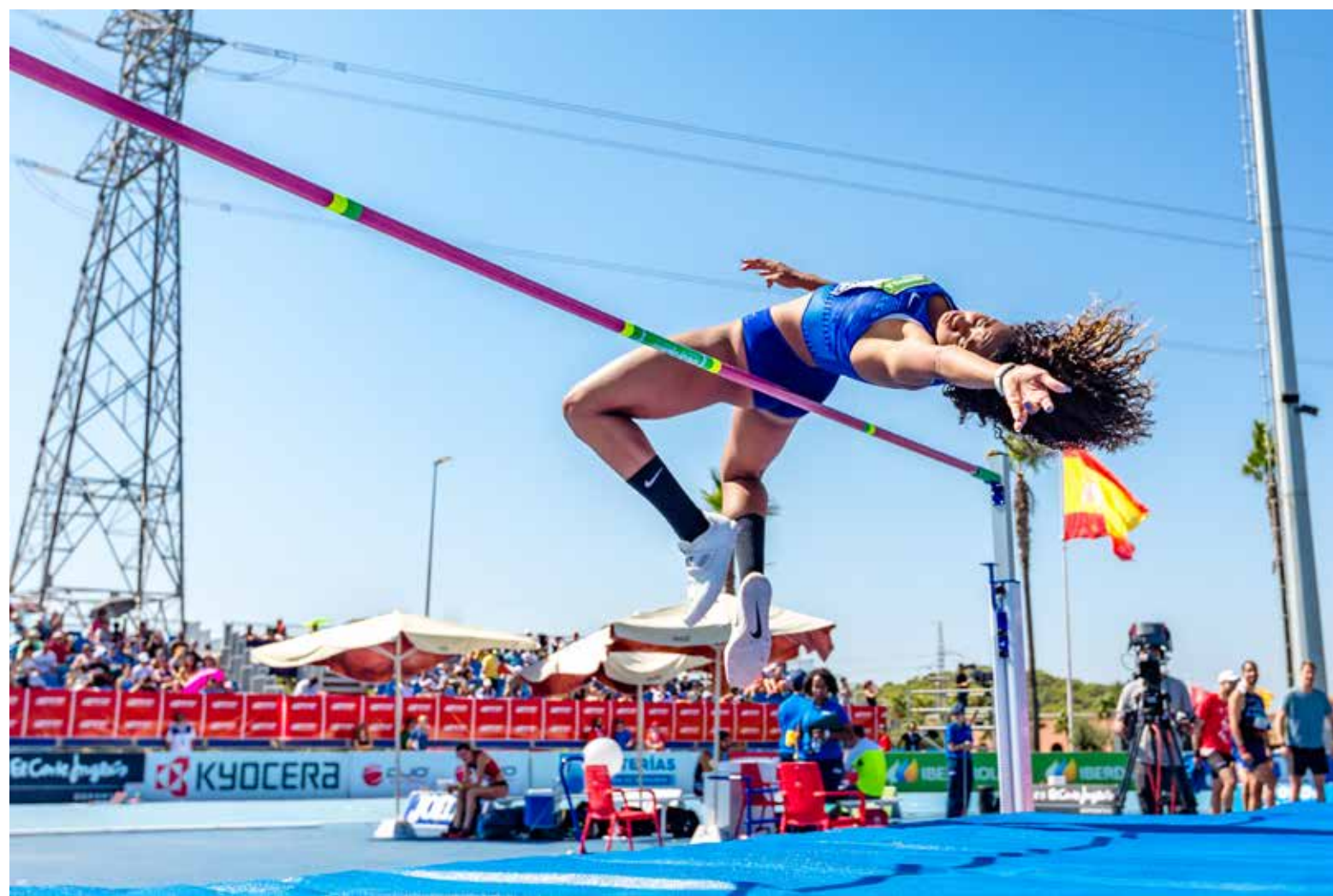




SPANISH ATHLETICS CHAMPIONSHIP

610 athletes took part from the 31st of August to the 1st of September 2019 in the 99th Spanish Athletics Championship" hold in La Nucía, in 42 athletic disciplines. The best Spanish Athletes trained for the first time in the athletics track of the new "Olympic Stadium Camilo Cano" in La Nucía. This was the first time in history that the Spanish Athletics Championship was hold in the province of Alicante.

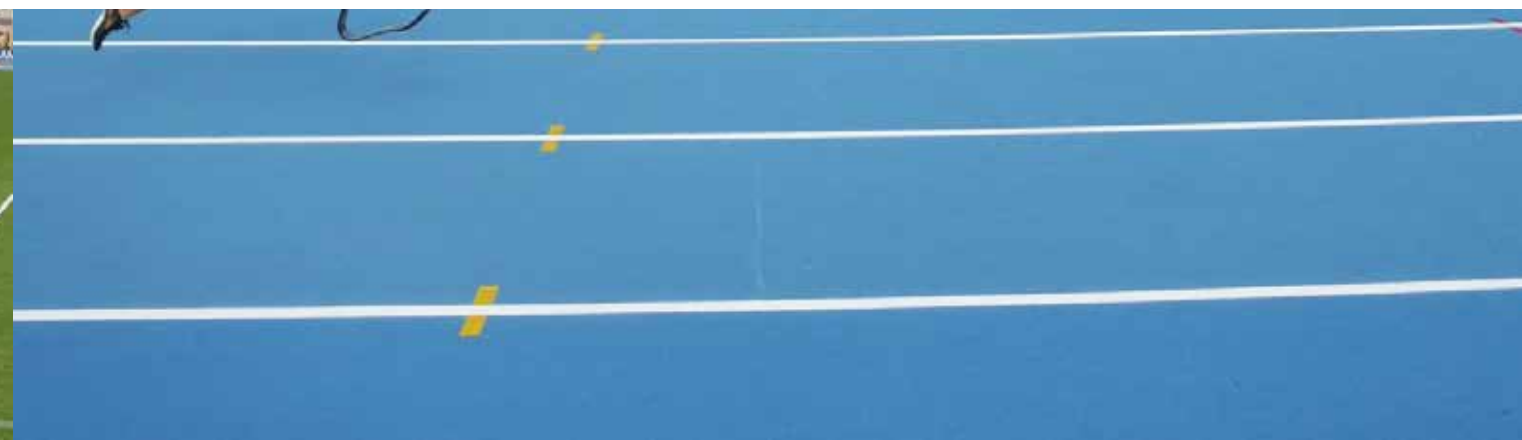






INTERNATIONAL MEETING OF ADAPTED ATHLETICS

45 Paralympic athletes from different nationalities, such as the British Richard Whitehead (gold medal in 2016 Rio and 2012 London) or the Polish athlete, Alicia Jeromin, took part in this international event organized by the Spanish Federation of Sports for physically disabled people.



LA NUCÍA FOOTBALL CLUB

It was founded in 1995 and since that year the Club has always been located in the facilities of the City of Sports Camilo Cano. At present, the Olympic Stadium is the field where La Nucía FC plays its matches. The first match in Second B between La Nucia FC and Cornellà served as the official opening of the Olympic Stadium.





CIUDAD DEPORTIVA CAMILO CANO

MORE THAN 80 FACILITIES DISTRIBUTED ALONG 250,000 SQUARE METRES.

THE CITY OF SPORTS IN FIGURES

450,000

square metres

Total area of the
City of Sports Camilo Cano.



4,500

Users come daily to these
facilities.



1.000.000

square metres

of Pine Forests with beautiful tracks to walk,
run or practice mountain bike.



FACILITIES IN THE CITY OF SPORTS CAMILO CANO

- 
1. Car Circuit RC
 2. Trial Bike Area.
 3. Skate Park
 4. BTT Centre.
 5. Dog Agility Track.
 6. BMX Bikes Circuit.
 7. Parkour Area.
 8. Two 3 Football Pitches.
 9. Two 7 Football Pitches.
 10. Volley /Beach Football Pitch.
 11. Artificial Grass Football 11 Pitch.
 12. Natural Grass Football 11 Pitch.
 13. Indoor Football Court.
 14. Mini Golf Area.
 15. Frontón and Squash
 16. Paddle Sports Complex.
 17. Indoor Swimming Pool.
 18. Indoor Sports Hall.
 19. Road safety education.
 20. Hotel Residence for Sportsmen and Sportswomen.
 21. Playroom.
 22. Padball Courts.
 23. Tennis Courts.
 24. Rocódromo (Climbing Wall).
 25. Outdoor Swimming Pool.
 26. Second Indoor Sports Hall.
 27. Athletics and Football Stadium.
 28. Ferrer Tennis Academy.
 29. Network of Paths and BTT Routes.
 30. Bike Park

FOOTBALL PITCHES



NATURAL GRASS FOOTBALL PITCH.

- 100x60m
- Changing Rooms for 2 teams.
- A 65m2 Gymnasium.
- Physiotherapy Room.



ARTIFICIAL GRASS FOOTBALL PITCH

- 104x57m
- With two 7 football pitches, 57x33m



2 SPECIFIC FOOTBALL 7 PITCHES.

- 55x38m



1 BEACH FOOTBALL PITCH OR 3 VOLLEY /BEACH FOOTBALL

- 40x30m



2 INDOOR FOOTBALL PITCHES 3:3

- 21x10m with artificial grass.



1 INDOOR FOOTBALL PITCH 5:5

- 40x20m with artificial grass and glass walls.



REFERENCES

FOOTBALL CAMPS

Campus del FC Barcelona

Campus Fundación R. Madrid

Campus Sunderland AFC

EQUIPOS DE FÚTBOL

British National Team.

FC Shakhtar Donetsk

FC Spartak Moscow

Frekrikstad FK

Skonto Riga FC

Sportul

Malmö FF

IFK Goteborg

FC Utrech

Athletic de Bilbao juvenil

Borussia Mönchengladbach

VFL Bochum

FC Lokomotiv Tbilisi

BK Kristiansund

FC Kickers Luzern

REFERENCES





INDOOR SWIMMING POOL

TRADITIONAL POOL 25X16M

- 8 lanes
- Maximum depth: 2.07m
- Minimum depth: 1.82m

POOL FOR BEGINNERS: 12.50 X 6M

- Depth: 1m



SPA AREA

- Jacuzzi.
- Footbath.
- Finnish Sauna.
- Turkish Bath.
- Roman Therm.
- Bithermal Showers.
- Uva Rays.



GYMNASIUM



INDOOR SPORTS HALL

1,885 SQUARE METRE MULTI-SPORTS COURT.

- 6 Changing Rooms for teams and 6 for trainers and coaches.
- Press Room.
- VIP Room.
- Offices.
- Wide Parking Places.
- 2 Restaurants

4 Multipurpose Room (tatami)

- Room 1: 89.83 m2
- Room 2: 129,70 m2
- Room 3: 93,67 m2
- Equipped with fixed tatami, 30mm thick and density of 200.
- Room 4: 147.40 m2
- Equipped with durotami , 20mm and ring, 5,50x5,50m
- Gymnasium: 271 m2





DAVID FERRER TENNIS ACADEMY

- 6 clay Tennis Courts, all of them with its own full lighting.
- 3 hard tennis courts, all of them with its own full lighting.
- Shop for sale of sports material and strings.





PADDLE TENNIS COURTS

- 12 Paddle Tennis Courts.
- 20x10m (One of them Indoor)





SECOND SPORTS HALL

The second Sports Hall in La Nucía will be a functional and dynamic Indoor Sports Hall with 2,854 square metres of synthetic track. It will have 4 changing rooms, a physical fitness room, a weight room and massage room.

The second Sports Hall will have just one stand in one of the sides. That will allow the opening of the side walls to create new spaces connected with the outdoor area.





MATCH:

HOTEL FOR ATHLETES

La Nucía Hotel-Residence will be the first one specifically addressed to sportsmen and women all over Spain. This Complex will have a surface area built in three 9,900 square metres towers and a 2,419 square metre parking place.

Thanks to these 144 quadruple rooms of 27 square metres each, this Hotel-Residence for Sportsmen and Women will have a capacity of approximately 576 guests.





OUR MAIN AIM IS TO BECOME
THE FIRST SMART SPORT DESTINATION IN THE WORLD.



LA NUCÍA
CIUDAD DEL DEPORTE

#LaNuciaCiudadDelDeporte

www.lanucia.es

www.ciudaddeportivacamilocano.com

www.estadiolimpiccamilocanolanucia.com

